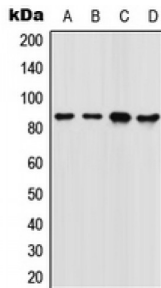
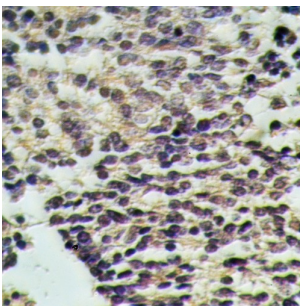


Forkhead Box Protein M1 (FOXM1) Antibody

Catalogue No.: abx215378



Western blot analysis of FOXM1 expression in (A) SW480, (B) 22RV1, (C) NIH3T3, and (D) rat colon whole cell lysates.



Immunohistochemical analysis of FOXM1 staining in human lung cancer formalin fixed paraffin embedded tissue section. The section was pre-treated using heat mediated antigen retrieval with sodium citrate buffer (pH 6.0). The section was then incubated with the antibody at room temperature and detected using an HRP conjugated compact polymer system. DAB was used as the chromogen. The section was then counterstained with haematoxylin and mounted with DPX.

FOXM1 Antibody is a Rabbit Polyclonal antibody against FOXM1.

Target: FOXM1

Reactivity: Human, Mouse, Rat

Host: Rabbit

Clonality: Polyclonal

Tested Applications: WB, IHC

Recommended dilutions: WB: 1/500 - 1/1000, IHC: 1/50. Optimal dilutions/concentrations should be determined by the end user.

Immunogen: KLH-conjugated synthetic peptide

Epitope Region: Central region of human FOXM1. The exact sequence is proprietary.

Purification: Purified by immunogen affinity chromatography.

Conjugation: Unconjugated

Specificity: Recognises endogenous levels of FOXM1 protein.

Abbexa Ltd, Innovation Centre, Cambridge Science Park, Cambridge, CB4 0EY, UK
Telephone: +44 (0) 1223 755950 - Fax: +44 (0) 1223 755951 - E-Mail: info@abbexa.com

Storage: Aliquot and store at -20 °C. Avoid repeated freeze/thaw cycles.

Swiss Prot: [Q08050](#) [O08696](#) [P97691](#)

GeneID: [2305](#)

Gene Symbol: FOXM1

Buffer: 0.42% Potassium phosphate, 0.87% Sodium chloride, pH 7.3, 30% glycerol and 0.01% sodium azide.

Note: This product is for research use only.