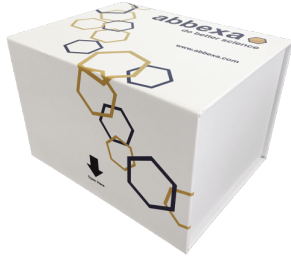


Human Macrophage Scavenger Receptor 1 (MSR1) CLIA Kit

Catalogue No.: abx197253



Human Macrophage Scavenger Receptor 1 (MSR1) CLIA Kit is a CLIA kit against Macrophage Scavenger Receptor 1 (MSR1).

Target:	Macrophage Scavenger Receptor 1 (MSR1)
Reactivity:	Human
Tested Applications:	CLIA
Recommended dilutions:	Optimal dilutions/concentrations should be determined by the end user.
Test Range:	62.5 pg/ml - 4000 pg/ml
Sensitivity:	37.5 pg/ml
Validity:	The validity for this kit is 6 months.
Storage:	Upon receipt, store at 4 °C.
Stability:	The stability of the kit is determined by the rate of activity loss. The loss rate is less than 5% within the expiration date under appropriate storage conditions. To minimize performance fluctuations, operation procedures and lab conditions should be strictly controlled. It is also strongly suggested that the whole assay is performed by the same user throughout.
Standard Form:	Lyophilized
ELISA Detection:	Fluorometric
ELISA Data:	Quantitative
Sample Type:	Serum, plasma and other biological fluids.

Note:

This product is for research use only.

The range and sensitivity is subject to change. Please contact us for the latest product information.

For accurate results, sample concentrations must be diluted to mid-range of the kit. If you require a specific range, please contact us in advance or write your request in your order comments.

Please note that our ELISA and CLIA kits are optimised for detection of native samples, rather than recombinant proteins. We are unable to guarantee detection of recombinant proteins, as they may have different sequences or tertiary structures to the native protein.