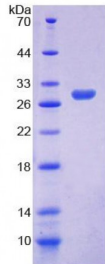


Human Engulfment And Cell Motility 2 (ELMO2) Protein

Catalogue No.: abx168972



SDS-PAGE analysis of Human ELMO2 Protein.

Human ELMO2 Protein (Recombinant) is a recombinant protein from Human. It is produced in E. coli using Prokaryotic expression.

Target:	Engulfment And Cell Motility 2 (ELMO2)
Origin:	Human
Host:	E. coli
Tested Applications:	ELISA, WB, IP, SDS-PAGE
Purity:	> 95%
Form:	Lyophilized
Conjugation:	Unconjugated
Storage:	Store at 2-8 °C for up to one month. Store at -80 °C for up to one year. Avoid repeated freeze/thaw cycles.
Expression:	Recombinant
Molecular Weight:	29.3 kDa
Swiss Prot:	Q96JJ3
Sequence Fragment:	Ser501-Gly720
Tag:	Two N-terminal tags, His-tag and T7-tag
Activity:	Not tested
Concentration:	Prior to lyophilization: 200 µg/ml

Abbexa Ltd, Innovation Centre, Cambridge Science Park, Cambridge, CB4 0EY, UK
Telephone: +44 (0) 1223 755950 - Fax: +44 (0) 1223 755951 - E-Mail: info@abbexa.com

Buffer: Prior to lyophilization: PBS, pH 7.4, containing 0.01% Sarcosyl, 1 mM DTT, 5% Trehalose and Proclin-300.

Note: This product is for research use only.