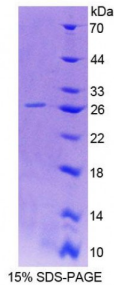


**Rat Signaling Lymphocytic Activation Molecule Family, Member 2 (SLAMF2) Protein**

Catalogue No.: abx168778



SDS-PAGE analysis of Rat SLAMF2 Protein.

Rat SLAMF2 Protein (Recombinant) is a recombinant protein from Rat. It is produced in *E. coli* using Prokaryotic expression.

<b>Target:</b>	Signaling Lymphocytic Activation Molecule Family, Member 2 (SLAMF2)
<b>Origin:</b>	Rat
<b>Host:</b>	<i>E. coli</i>
<b>Tested Applications:</b>	ELISA, WB, IP, SDS-PAGE
<b>Purity:</b>	> 90%
<b>Form:</b>	Lyophilized
<b>Conjugation:</b>	Unconjugated
<b>Storage:</b>	Store at 2-8 °C for up to one month. Store at -80 °C for up to one year. Avoid repeated freeze/thaw cycles.
<b>Expression:</b>	Recombinant
<b>Molecular Weight:</b>	28.7 kDa
<b>Swiss Prot:</b>	<a href="#">P10252</a>
<b>Sequence Fragment:</b>	Phe23-Ala240
<b>Tag:</b>	Two N-terminal tags, His-tag and T7-tag
<b>Activity:</b>	Not tested
<b>Concentration:</b>	Prior to lyophilization: 200 µg/ml

Abbexa Ltd, Innovation Centre, Cambridge Science Park, Cambridge, CB4 0EY, UK  
Telephone: +44 (0) 1223 755950 - Fax: +44 (0) 1223 755951 - E-Mail: [info@abbexa.com](mailto:info@abbexa.com)

**Buffer:** Prior to lyophilization: PBS, pH 7.4, containing 0.01% Sarcosyl, 1 mM DTT, 5% Trehalose and Proclin-300.

**Note:** This product is for research use only.