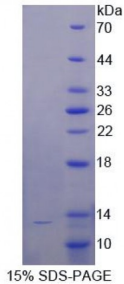


**Human Target Of The Antiproliferative Antibody 1 (TAPA1) Protein**

Catalogue No.: abx168684



SDS-PAGE analysis of Human TAPA1 Protein.

Human TAPA1 Protein (Recombinant) is a recombinant protein from Human. It is produced in *E. coli* using Prokaryotic expression.

**Target:** Target Of The Antiproliferative Antibody 1 (TAPA1)**Origin:** Human**Host:** *E. coli***Tested Applications:** ELISA, WB, IP, SDS-PAGE**Purity:** > 95%**Form:** Lyophilized**Conjugation:** Unconjugated**Storage:** Store at 2-8 °C for up to one month. Store at -80 °C for up to one year. Avoid repeated freeze/thaw cycles.**Expression:** Recombinant**Molecular Weight:** 13.4 kDa**Swiss Prot:** [P60033](#)**Sequence Fragment:** Phe113-Lys201**Tag:** Two N-terminal tags, His-tag and T7-tag**Activity:** Not tested**Concentration:** Prior to lyophilization: 200 µg/ml

Abbexa Ltd, Innovation Centre, Cambridge Science Park, Cambridge, CB4 0EY, UK  
Telephone: +44 (0) 1223 755950 - Fax: +44 (0) 1223 755951 - E-Mail: [info@abbexa.com](mailto:info@abbexa.com)

**Buffer:** Prior to lyophilization: PBS, pH 7.4, containing 0.01% Sarcosyl, 1 mM DTT, 5% Trehalose and Proclin-300.

**Note:** This product is for research use only.