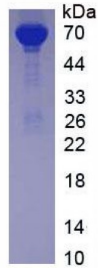


Abbexa Ltd, Innovation Centre, Cambridge Science Park, Cambridge, CB4 0EY, UK  
Telephone: +44 (0) 1223 755950 - Fax: +44 (0) 1223 755951 - E-Mail: info@abbexa.com

## Rabbit Albumin (ALB) Protein

Catalogue No.: abx168601



SDS-PAGE analysis of Albumin Protein.

Albumin Protein (Native) is a protein produced in Rabbit.

**Target:** Albumin (ALB)

**Origin:** Rabbit

**Host:** Rabbit

**Tested Applications:** WB, SDS-PAGE

**Purity:** > 90%

**Form:** Lyophilized

**Conjugation:** Unconjugated

**Storage:** Store at 2-8 °C for up to one month. Store at -80 °C for up to one year. Avoid repeated freeze/thaw cycles.

**Expression:** Native

**Molecular Weight:** 66.4 kDa (Predicted Molecular Mass), 66.4 kDa (Accurate Molecular Mass)

**Sequence Fragment:** Full length.

**Activity:** Not tested

**Concentration:** Prior to lyophilization: 200 µg/ml

**Buffer:** Prior to lyophilization: PBS, pH 7.4, containing 0.01% Sarcosyl, 1 mM DTT, 5% Trehalose and Proclin-300.

**Note:** This product is for research use only.