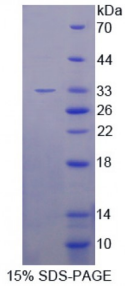


Mouse Feline Sarcoma Oncogene (FES) Protein

Catalogue No.: abx168455



SDS-PAGE analysis of Feline Sarcoma Oncogene Protein.

Feline Sarcoma Oncogene Protein (Recombinant) is a protein produced in Mouse.

Target: Feline Sarcoma Oncogene (FES)

Origin: Mouse

Host: E. coli

Tested Applications: ELISA, WB, IP, SDS-PAGE

Purity: > 95%

Form: Lyophilized

Reconstitution: Reconstitute in sterile PBS, pH 7.2-7.4.

Conjugation: Unconjugated

Storage: Store at 2-8 °C for up to one month. Store at -80 °C for up to one year. Avoid repeated freeze/thaw cycles.

Expression: Recombinant

Molecular Weight: 33 kDa

Sequence Fragment: Asp510-Arg770

Sequence: MGSSHHHHHH SSVLPRGSH MASMTGGQQM GRGSEF- D NLYRLEGDGF PSIPLLITHL
LSSQQPLTKK SGVLFRAVP KDKWVLKHED LVLGEQIGRG NFGVEVFSGRL RADNTPVAVK
SCRETLPPDL KAKFLQEARI LKQYNHPNIV RLIGVCTQKQ PIYIVMELVQ GGDFTFLRT
EGARLRVKTL LQMVGDAAAG MEYLESKCCI HRDLAARNCL VTEKNVLKIS DFGMSREEAD
GIYAASAGLR QVPVKWTAPE ALNYGRYSSE SDVWSFGILL WETFSLGASP YPNLTNQQTR

Abbexa Ltd, Innovation Centre, Cambridge Science Park, Cambridge, CB4 0EY, UK
Telephone: +44 (0) 1223 755950 - Fax: +44 (0) 1223 755951 - E-Mail: info@abbexa.com

Tag: N-terminal His-tag, T7 tag

Activity: Not tested

Endotoxin Level: < 1.0 EU per 1 µg (LAL method)

Concentration: Prior to lyophilization: 200 µg/ml

Buffer: Prior to lyophilization: PBS, pH 7.4, containing 0.01% Sarcosyl, 1 mM DTT, 5% Trehalose and Proclin-300.

Note: This product is for research use only.