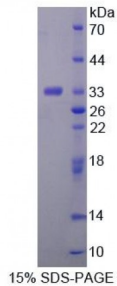


Abbexa Ltd, Innovation Centre, Cambridge Science Park, Cambridge, CB4 0EY, UK  
Telephone: +44 (0) 1223 755950 - Fax: +44 (0) 1223 755951 - E-Mail: info@abbexa.com

## Mouse Trehalase (TREH) Protein

Catalogue No.: abx168356



SDS-PAGE analysis of Trehalase Protein.

Trehalase Protein (Recombinant) is a protein produced in Mouse.

**Target:** Trehalase (TREH)

**Origin:** Mouse

**Tested Applications:** ELISA, WB, IP, SDS-PAGE

**Purity:** > 92%

**Form:** Lyophilized

**Conjugation:** Unconjugated

**Storage:** Store at 2-8 °C for up to one month. Store at -80 °C for up to one year. Avoid repeated freeze/thaw cycles.

**Expression:** Recombinant

**Molecular Weight:** 32kDa

**Sequence Fragment:** Ser151-Tyr411

**Tag:** N-terminal His-tag, T7 tag

**Activity:** Not tested

**Concentration:** Prior to lyophilization: 200 µg/ml

**Buffer:** Prior to lyophilization: 20 mM Tris, 150 mM NaCl, pH 8.0, containing 1 mM EDTA, 1 mM DTT, 0.01% Sarcosyl, 5% Trehalose and Proclin-300.

**Note:** This product is for research use only.