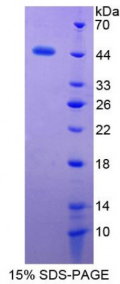


Abbexa Ltd, Innovation Centre, Cambridge Science Park, Cambridge, CB4 0EY, UK  
Telephone: +44 (0) 1223 755950 - Fax: +44 (0) 1223 755951 - E-Mail: info@abbexa.com

## Human Glycophorin C (GYPC) Protein

Catalogue No.: abx168166



SDS-PAGE analysis of Glycophorin C Protein.

Glycophorin C Protein (Recombinant) is a protein produced in Human.

**Target:** Glycophorin C (GYPC)

**Origin:** Human

**Host:** E. coli

**Tested Applications:** ELISA, WB, IP, SDS-PAGE

**Purity:** > 95%

**Form:** Lyophilized

**Reconstitution:** Reconstitute in sterile PBS, pH7.2-7.4.

**Conjugation:** Unconjugated

**Storage:** Store at 2-8 °C for up to one month. Store at -80 °C for up to one year. Avoid repeated freeze/thaw cycles.

**Expression:** Recombinant

**Molecular Weight:** 46.2 kDa

**Swiss Prot:** [P04921](#)

**Sequence Fragment:** Met1-Ile128

Abbexa Ltd, Innovation Centre, Cambridge Science Park, Cambridge, CB4 0EY, UK  
Telephone: +44 (0) 1223 755950 - Fax: +44 (0) 1223 755951 - E-Mail: info@abbexa.com

**Sequence:** MSPILGYWKI KGLVQPTRL L LEYLEEKYEE HLYERDEGDK WRNKKFELGL EFPNLPYYID  
GDVLLTQSMA IIRYIADKHN MLGGCPKERA EISMLEGAVL DIRYGVSRIA YSKDFETLKV  
DFLSKLP EML KMFEDRLCHK TYLNGDHVTH PDFMLYDALD VVLYMDPMCL DAFPKLVCFK  
KRIEAIQID KYLKSSKYIA WPLQG WQATF GGGDHPPKSD GSTSGSGHHH HHSAGLVPR  
GSTAIGMKET AAKFERQHM DSPDLGTGGG SGIEGRGSMG YRGSEF-MWSTRSPNST  
AWPLSLEPDP GMASASTTMH TTTIAEPDPG MSGWPDGRME TSTPTIMDIV VIAGVIAAVA  
IVLVSLLFVM LRYMYRHKGT YHTNEAKGTE FAESADAALQ GDPALQDAGD SSRKEYF

**Tag:** Two N-terminal tags, His-tag and GST-tag

**Activity:** Not tested

**Endotoxin Level:** <1.0EU per 1 µg (determined by the LAL method)

**Concentration:** Prior to lyophilization: 200 µg/ml

**Buffer:** Prior to lyophilization: PBS, pH 7.4, containing 0.01% Sarcosyl, 1 mM DTT, 5% Trehalose and Proclin-300.

**Note:** This product is for research use only.