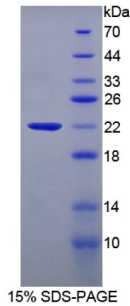


Human Amy1 Associated Protein Expressed In Testis (AAT1) Protein

Catalogue No.: abx167855



SDS-PAGE analysis of Amy1 Associated Protein Expressed In Testis Protein.

Amy1 Associated Protein Expressed In Testis (Recombinant) is a protein produced in Human.

Target: Amy1 Associated Protein Expressed In Testis (AAT1)

Origin: Human

Tested Applications: ELISA, WB, IP, SDS-PAGE

Purity: > 92%

Form: Lyophilized

Conjugation: Unconjugated

Storage: Store at 2-8 °C for up to one month. Store at -80 °C for up to one year. Avoid repeated freeze/thaw cycles.

Expression: Recombinant

Molecular Weight: 22kDa

Sequence Fragment: Ser29-Leu181

Tag: N-terminal His-tag, T7 tag

Activity: Not tested

Concentration: Prior to lyophilization: 200 µg/ml

Buffer: Prior to lyophilization: PBS, pH 7.4, containing 0.01% Sarcosyl, 1 mM DTT, 5% Trehalose and Proclin-300.

Note: This product is for research use only.