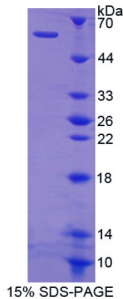


Human Cat Eye Syndrome Chromosome Region, Candidate 1 (CECR1) Protein

Catalogue No.: abx167165



SDS-PAGE analysis of Cat Eye Syndrome Chromosome Region, Candidate 1 Protein.

Cat Eye Syndrome Chromosome Region, Candidate 1 Protein (Recombinant) is a protein produced in Human.

| | |
|-----------------------------|---|
| Target: | Cat Eye Syndrome Chromosome Region, Candidate 1 (CECR1) |
| Origin: | Human |
| Tested Applications: | ELISA, WB, IP, SDS-PAGE |
| Purity: | > 95% |
| Form: | Lyophilized |
| Conjugation: | Unconjugated |
| Storage: | Store at 2-8 °C for up to one month. Store at -80 °C for up to one year. Avoid repeated freeze/thaw cycles. |
| Expression: | Recombinant |
| Molecular Weight: | 60kDa |
| Sequence Fragment: | Ile30-Lys511 |
| Tag: | N-terminal His-tag, T7 tag |
| Activity: | Not tested |
| Concentration: | Prior to lyophilization: 200 µg/ml |
| Buffer: | Prior to lyophilization: PBS, pH 7.4, containing 0.01% Sarcosyl, 1 mM DTT, 5% Trehalose and Proclin-300. |

Note: This product is for research use only.