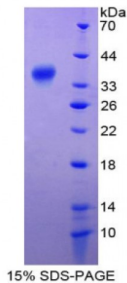


Abbexa Ltd, Innovation Centre, Cambridge Science Park, Cambridge, CB4 0EY, UK
Telephone: +44 (0) 1223 755950 - Fax: +44 (0) 1223 755951 - E-Mail: info@abbexa.com

Human V-Rel Reticuloendotheliosis Viral Oncogene Homolog A (RELA) Protein

Catalogue No.: abx167154



SDS-PAGE analysis of V-Rel Reticuloendotheliosis Viral Oncogene Homolog A Protein.

V-Rel Reticuloendotheliosis Viral Oncogene Homolog A Protein (Recombinant) is a protein produced in Human.

Target: V-Rel Reticuloendotheliosis Viral Oncogene Homolog A (RELA)

Origin: Human

Tested Applications: ELISA, WB, IP, SDS-PAGE

Purity: > 92%

Form: Lyophilized

Conjugation: Unconjugated

Storage: Store at 2-8 °C for up to one month. Store at -80 °C for up to one year. Avoid repeated freeze/thaw cycles.

Expression: Recombinant

Molecular Weight: 37kDa

Sequence Fragment: Pro19-Tyr306

Tag: Two N-terminal tags, His-tag and T7-tag

Activity: Not tested

Concentration: Prior to lyophilization: 200 µg/ml

Buffer: Prior to lyophilization: 100 mM NaHCO₃, 500 mM NaCl, pH 8.3, containing 1 mM EDTA, 1 mM DTT, 0.01% Sarcosyl, 5% Trehalose and Proclin-300.

Note: This product is for research use only.