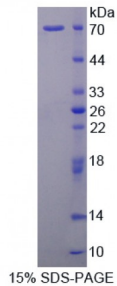


Human Complement Component 1, Q Receptor (C1qR1) Protein

Catalogue No.: abx167146



SDS-PAGE analysis of Complement Component 1, Q Receptor Protein.

Complement Component 1, Q Receptor Protein (Recombinant) is a protein produced in Human.

Target: Complement Component 1, Q Receptor (C1qR1)**Origin:** Human**Tested Applications:** ELISA, WB, IP, SDS-PAGE**Purity:** > 95%**Form:** Lyophilized**Conjugation:** Unconjugated**Storage:** Store at 2-8 °C for up to one month. Store at -80 °C for up to one year. Avoid repeated freeze/thaw cycles.**Expression:** Recombinant**Molecular Weight:** 70kDa**Sequence Fragment:** Glu227-Thr493**Tag:** Two N-terminal tags, His-tag and GST-tag**Activity:** Not tested**Concentration:** Prior to lyophilization: 200 µg/ml**Buffer:** Prior to lyophilization: PBS, pH 7.4, containing 0.01% Sarcosyl, 1 mM DTT, 5% Trehalose and Proclin-300.**Note:** This product is for research use only.