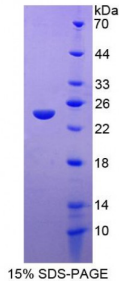


Abbexa Ltd, Innovation Centre, Cambridge Science Park, Cambridge, CB4 0EY, UK
Telephone: +44 (0) 1223 755950 - Fax: +44 (0) 1223 755951 - E-Mail: info@abbexa.com

Human Family With Sequence Similarity 20, Member A (FAM20A) Protein

Catalogue No.: abx167051



SDS-PAGE analysis of Family With Sequence Similarity 20, Member A Protein.

Family With Sequence Similarity 20, Member A Protein (Recombinant) is a protein produced in Human.

Target:	Family With Sequence Similarity 20, Member A (FAM20A)
Origin:	Human
Tested Applications:	ELISA, WB, IP, SDS-PAGE
Purity:	> 95%
Form:	Lyophilized
Conjugation:	Unconjugated
Storage:	Store at 2-8 °C for up to one month. Store at -80 °C for up to one year. Avoid repeated freeze/thaw cycles.
Expression:	Recombinant
Molecular Weight:	24kDa
Sequence Fragment:	Lys368-Ser541
Tag:	Two N-terminal tags, His-tag and S-tag
Activity:	Not tested
Concentration:	Prior to lyophilization: 200 µg/ml
Buffer:	Prior to lyophilization: 20 mM Tris, 150 mM NaCl, pH 8.0, containing 1 mM EDTA, 1 mM DTT, 0.01% Sarcosyl, 5% Trehalose and Proclin-300.

Note: This product is for research use only.