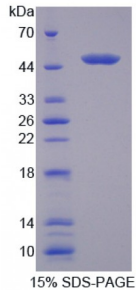


Human Cysteine Conjugate Beta Lyase, Cytoplasmic (CCbL1) Protein

Catalogue No.: abx166880



SDS-PAGE analysis of Cysteine Conjugate beta Lyase, Cytoplasmic Protein.

Cysteine Conjugate Beta Lyase, Cytoplasmic Protein (Recombinant) is a protein produced in Human.

Target:	Cysteine Conjugate Beta Lyase, Cytoplasmic (CCbL1)
Origin:	Human
Tested Applications:	ELISA, WB, IP, SDS-PAGE
Purity:	> 98%
Form:	Lyophilized
Conjugation:	Unconjugated
Storage:	Store at 2-8 °C for up to one month. Store at -80 °C for up to one year. Avoid repeated freeze/thaw cycles.
Expression:	Recombinant
Molecular Weight:	52kDa
Sequence Fragment:	Met1-Leu422
Tag:	N-terminal His-tag
Activity:	Not tested
Concentration:	Prior to lyophilization: 200 µg/ml
Buffer:	Prior to lyophilization: PBS, pH 7.4, containing 0.01% Sarcosyl, 1 mM DTT, 5% Trehalose and Proclin-300.
Note:	This product is for research use only.