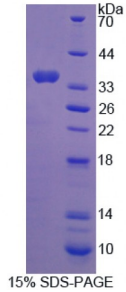


**Human C-Ros Oncogene 1, Receptor Tyrosine Kinase (ROS1) Protein**

Catalogue No.: abx166823



SDS-PAGE analysis of C-Ros Oncogene 1, Receptor Tyrosine Kinase Protein.

C-Ros Oncogene 1, Receptor Tyrosine Kinase Protein (Recombinant) is a protein produced in Human.

|                             |   |
|-----------------------------|---|
| <b>Target:</b>              | C-Ros Oncogene 1, Receptor Tyrosine Kinase (ROS1)   |
| <b>Origin:</b>              | Human   |
| <b>Tested Applications:</b> | ELISA, WB, IP, SDS-PAGE   |
| <b>Purity:</b>              | > 92%   |
| <b>Form:</b>                | Lyophilized   |
| <b>Conjugation:</b>         | Unconjugated  |
| <b>Storage:</b>             | Store at 2-8 °C for up to one month. Store at -80 °C for up to one year. Avoid repeated freeze/thaw cycles. |
| <b>Expression:</b>          | Recombinant   |
| <b>Molecular Weight:</b>    | 36kDa   |
| <b>Sequence Fragment:</b>   | Leu1945-Phe2222   |
| <b>Tag:</b>                 | N-terminal His-tag  |
| <b>Activity:</b>            | Not tested  |
| <b>Concentration:</b>       | Prior to lyophilization: 200 µg/ml  |
| <b>Buffer:</b>              | Prior to lyophilization: PBS, pH 7.4, containing 0.01% Sarcosyl, 1 mM DTT, 5% Trehalose and Proclin-300.    |
| <b>Note:</b>                | This product is for research use only.  |