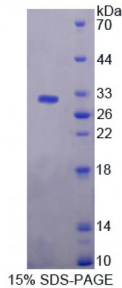


Abbexa Ltd, Innovation Centre, Cambridge Science Park, Cambridge, CB4 0EY, UK  
Telephone: +44 (0) 1223 755950 - Fax: +44 (0) 1223 755951 - E-Mail: info@abbexa.com

## Human Caspase Recruitment Domain Family, Member 9 (CARD9) Protein

Catalogue No.: abx166700



SDS-PAGE analysis of Caspase Recruitment Domain Family, Member 9 Protein.

Caspase Recruitment Domain Family, Member 9 Protein (Recombinant) is a protein produced in Human.

<b>Target:</b>	Caspase Recruitment Domain Family, Member 9 (CARD9)
<b>Origin:</b>	Human
<b>Tested Applications:</b>	ELISA, WB, IP, SDS-PAGE
<b>Purity:</b>	> 98%
<b>Form:</b>	Lyophilized
<b>Conjugation:</b>	Unconjugated
<b>Storage:</b>	Store at 2-8 °C for up to one month. Store at -80 °C for up to one year. Avoid repeated freeze/thaw cycles.
<b>Expression:</b>	Recombinant
<b>Molecular Weight:</b>	31kDa
<b>Sequence Fragment:</b>	Ser227-Ile361
<b>Tag:</b>	N-terminal His-tag, T7 tag
<b>Activity:</b>	Not tested
<b>Concentration:</b>	Prior to lyophilization: 200 µg/ml
<b>Buffer:</b>	Prior to lyophilization: PBS, pH 7.4, containing 0.01% Sarcosyl, 1 mM DTT, 5% Trehalose and Proclin-300.

Abbexa Ltd, Innovation Centre, Cambridge Science Park, Cambridge, CB4 0EY, UK  
Telephone: +44 (0) 1223 755950 - Fax: +44 (0) 1223 755951 - E-Mail: [info@abbexa.com](mailto:info@abbexa.com)

**Note:** This product is for research use only.