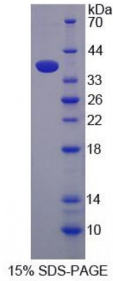


Abbexa Ltd, Innovation Centre, Cambridge Science Park, Cambridge, CB4 0EY, UK
Telephone: +44 (0) 1223 755950 - Fax: +44 (0) 1223 755951 - E-Mail: info@abbexa.com

Human Gamma-Glutamyl Hydrolase (gGH) Protein

Catalogue No.: abx166621



SDS-PAGE analysis of gamma Glutamyl Hydrolase Protein.

Gamma-Glutamyl Hydrolase Protein (Recombinant) is a protein produced in Human.

Target: Gamma-Glutamyl Hydrolase (gGH)

Origin: Human

Host: E. coli

Tested Applications: ELISA, WB, IP, SDS-PAGE

Purity: > 95%

Form: Lyophilized

Reconstitution: Reconstitute in sterile ddH₂O.

Conjugation: Unconjugated

Storage: Store at 2-8 °C for up to one month. Store at -80 °C for up to one year. Avoid repeated freeze/thaw cycles.

Expression: Recombinant

Molecular Weight: 37.3 kDa

Swiss Prot: [Q92820](#)

Sequence Fragment: Arg25-Asp318

Abbexa Ltd, Innovation Centre, Cambridge Science Park, Cambridge, CB4 0EY, UK
Telephone: +44 (0) 1223 755950 - Fax: +44 (0) 1223 755951 - E-Mail: info@abbexa.com

Sequence: RPHGDT AKKPIIGILM QKCRNKVMKN YGRYYIAASY VKYLESAGAR VVPVRLDLTE KDYEILFKSI
NGILFPGGSV DLRRSDYAKV AKIFYNLSIQ SFDDGDYFPV WGTCLGFEEL SLLISGECLL
TATD TVDVAM PLNFTGGQLH SRMFQNFPE LLLSLAVEPL TANFHKWSLS VKNFTMNEKL
KKFFNVLTTN TDGKIEFIST MEGYKYPVYG VQWHPEKAPY EWKNLDGISH APNAVKTAFY
LAEFFVNEAR KNNHHFKSES EEEKALIQF SPIYTGNISS FQQCYIFD

Tag: Two N-terminal tags, His-tag and S-tag

Activity: Not tested

Concentration: Prior to lyophilization: 200 µg/ml

Buffer: Prior to lyophilization: PBS, pH 7.4, containing 0.01% Sarcosyl, 1 mM DTT, 5% Trehalose and Proclin-300.

Note: This product is for research use only.