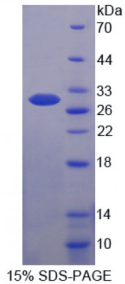


## Mouse Breast Cancer Susceptibility Protein 2 (BRCA2) Protein

Catalogue No.: abx166162



SDS-PAGE analysis of Breast Cancer Susceptibility Protein 2 Protein.

Breast Cancer Susceptibility Protein 2 (Recombinant) is a protein produced in Mouse.

**Target:** Breast Cancer Susceptibility Protein 2 (BRCA2)

**Origin:** Mouse

**Tested Applications:** ELISA, WB, IP, SDS-PAGE

**Purity:** > 92%

**Form:** Lyophilized

**Conjugation:** Unconjugated

**Storage:** Store at 2-8 °C for up to one month. Store at -80 °C for up to one year. Avoid repeated freeze/thaw cycles.

**Expression:** Recombinant

**Molecular Weight:** 30kDa

**Sequence Fragment:** Glu2990-Ala3232

**Tag:** N-terminal His-tag, T7 tag

**Activity:** Not tested

**Concentration:** Prior to lyophilization: 200 µg/ml

**Buffer:** Prior to lyophilization: PBS, pH 7.4, containing 0.01% Sarcosyl, 1 mM DTT, 5% Trehalose and Proclin-300.

**Note:** This product is for research use only.