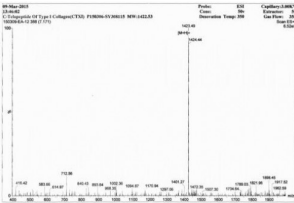


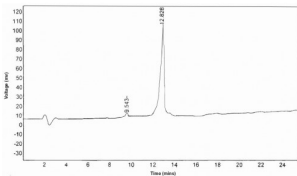
Abbexa Ltd, Innovation Centre, Cambridge Science Park, Cambridge, CB4 0EY, UK
 Telephone: +44 (0) 1223 755950 - Fax: +44 (0) 1223 755951 - E-Mail: info@abbexa.com

Human Cross Linked C-Telopeptide Of Type I Collagen (CTXI) Peptide (KLH)

Catalogue No.: abx165691



Mass spectrometry analysis of Human CTXI (prior to conjugation).



HPLC analysis of unconjugated Human CTXI (prior to conjugation).

C-Telopropeptide Of Type I Collagen Protein is a Human protein.

- Target:** Cross Linked C-Telopeptide Of Type I Collagen (CTXI)
- Origin:** Human
- Host:** Synthetic
- Tested Applications:** SDS-PAGE
- Purity:** > 90%
- Form:** Lyophilized
- Reconstitution:** Reconstitute in 10 mM PBS, pH 7.4, to a concentration of 0.1-1.0 mg/ml. Do not vortex.
- Conjugation:** KLH
- Storage:** Store at 2-8 °C for up to one month. Store at -80 °C for up to one year. Avoid repeated freeze/thaw cycles.
- Swiss Prot:** [P02452](#)

Abbexa Ltd, Innovation Centre, Cambridge Science Park, Cambridge, CB4 0EY, UK
Telephone: +44 (0) 1223 755950 - Fax: +44 (0) 1223 755951 - E-Mail: info@abbexa.com

Sequence Fragment: Glu1207-Ala1218

Sequence: EKAH DGGRYYRA

Activity: Not tested

Buffer: Prior to lyophilization: 10 mM PBS, pH 7.4.

Note: This product is for research use only.