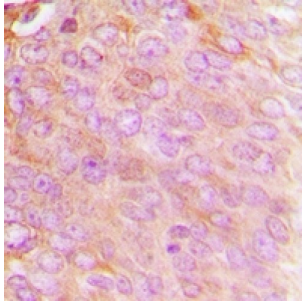
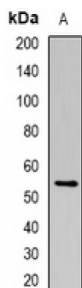


Monocarboxylate Transporter 4 (MCT4) Antibody

Catalogue No.: abx142228



Immunohistochemical analysis of MCT4 staining in human breast cancer formalin fixed paraffin embedded tissue section. The section was pre-treated using heat mediated antigen retrieval with sodium citrate buffer (pH 6.0). The section was then incubated with the antibody at room temperature and detected using an HRP conjugated compact polymer system. DAB was used as the chromogen. The section was then counterstained with haematoxylin and mounted with DPX.



Western blot analysis of MCT4 expression in mouse skeletal muscle (A) whole cell lysates.

MCT4 Antibody is a Rabbit Polyclonal against MCT4.

Target:	MCT4
Reactivity:	Human, Mouse
Host:	Rabbit
Clonality:	Polyclonal
Tested Applications:	WB, IHC
Recommended dilutions:	WB: 1/1000 - 1/2000, IHC: 1/50 - 1/200. Optimal dilutions/concentrations should be determined by the end user.
Immunogen:	Recombinant full length protein of human MCT4.
Purification:	Affinity Chromatography.
Form:	Liquid
Isotype:	IgG
Specificity:	Recognizes endogenous levels of MCT4 protein.

Abbexa Ltd, Innovation Centre, Cambridge Science Park, Cambridge, CB4 0EY, UK
Telephone: +44 (0) 1223 755950 - Fax: +44 (0) 1223 755951 - E-Mail: info@abbexa.com

- Storage:** Aliquot and store at -20°C for one year. Avoid freeze/thaw cycles.
- Swiss Prot:** [O15374](#)
- GeneID:** [9122 229699](#)
- Gene Symbol:** SLC16A4
- Buffer:** 0.42% Potassium phosphate, 0.87% Sodium chloride, pH 7.3, 30% glycerol, and 0.01% sodium azide.
- Note:** This product is for research use only.