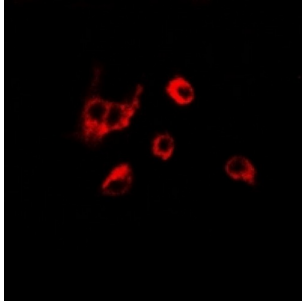


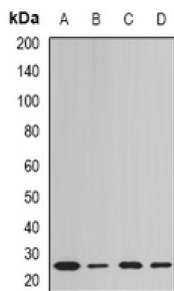
Abbexa Ltd, Innovation Centre, Cambridge Science Park, Cambridge, CB4 0EY, UK
 Telephone: +44 (0) 1223 755950 - Fax: +44 (0) 1223 755951 - E-Mail: info@abbexa.com

Peroxiredoxin 6 (PRDX6) Antibody

Catalogue No.: abx142170



Immunofluorescent analysis of Peroxiredoxin 6 staining in K562 cells. Formalin-fixed cells were permeabilized with 0.1% Triton X-100 in TBS for 5-10 minutes and blocked with 3% BSA-PBS for 30 minutes at room temperature. Cells were probed with the primary antibody in 3% BSA-PBS and incubated overnight at 4 °C in a humidified chamber. Cells were washed with PBST and incubated with a DyLight 594-conjugated secondary antibody (red) in PBS at room temperature in the dark.



Western blot analysis of Peroxiredoxin 6 expression in PC3 (A), K562 (B), mouse liver (C), mouse heart (D) whole cell lysates.

Peroxiredoxin 6 Antibody is a Rabbit Polyclonal against Peroxiredoxin 6.

Target: Peroxiredoxin 6

Reactivity: Human, Mouse, Rat

Host: Rabbit

Clonality: Polyclonal

Tested Applications: WB, IF/ICC

Recommended dilutions: WB: 1/500 - 1/2000, IF/ICC: 1/50 - 1/200. Optimal dilutions/concentrations should be determined by the end user.

Immunogen: Recombinant full length protein of human Peroxiredoxin 6.

Purification: Affinity Chromatography.

Form: Liquid

Isotype: IgG

Specificity: Recognizes endogenous levels of Peroxiredoxin 6 protein.

Abbexa Ltd, Innovation Centre, Cambridge Science Park, Cambridge, CB4 0EY, UK
Telephone: +44 (0) 1223 755950 - Fax: +44 (0) 1223 755951 - E-Mail: info@abbexa.com

- Storage:** Aliquot and store at -20°C for one year. Avoid freeze/thaw cycles.
- Swiss Prot:** [P30041](#)
- GeneID:** [9588](#) [102642619](#) [11758](#) [94167](#)
- Gene Symbol:** PRDX6
- Buffer:** 0.42% Potassium phosphate, 0.87% Sodium chloride, pH 7.3, 30% glycerol, and 0.01% sodium azide.
- Note:** This product is for research use only.