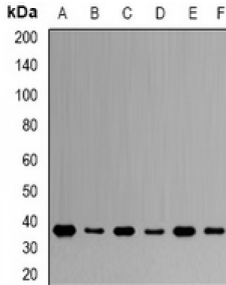


Abbexa Ltd, Innovation Centre, Cambridge Science Park, Cambridge, CB4 0EY, UK
 Telephone: +44 (0) 1223 755950 - Fax: +44 (0) 1223 755951 - E-Mail: info@abbexa.com

NK2 Homeobox 5 (NKX2-5) Antibody

Catalogue No.: abx142100



Western blot analysis of NKX2-5 expression in OVCAR3 (A), SW620 (B), BT474 (C), HL60 (D), mouse heart (E), mouse spleen (F) whole cell lysates.

NKX2-5 Antibody is a Rabbit Polyclonal against NKX2-5.

Target: NKX2-5

Reactivity: Human, Mouse, Rat

Host: Rabbit

Clonality: Polyclonal

Tested Applications: WB

Recommended dilutions: WB: 1/500 - 1/2000. Optimal dilutions/concentrations should be determined by the end user.

Immunogen: Recombinant full length protein of human NKX2-5.

Purification: Affinity Chromatography.

Form: Liquid

Isotype: IgG

Specificity: Recognizes endogenous levels of NKX2-5 protein.

Storage: Aliquot and store at -20°C for one year. Avoid freeze/thaw cycles.

Swiss Prot: [P52952](#)

GeneID: [1482](#) [18091](#) [114109](#)

Gene Symbol: NKX2-5

Abbexa Ltd, Innovation Centre, Cambridge Science Park, Cambridge, CB4 0EY, UK
Telephone: +44 (0) 1223 755950 - Fax: +44 (0) 1223 755951 - E-Mail: info@abbexa.com

Buffer: 0.42% Potassium phosphate, 0.87% Sodium chloride, pH 7.3, 30% glycerol, and 0.01% sodium azide.

Note: This product is for research use only.