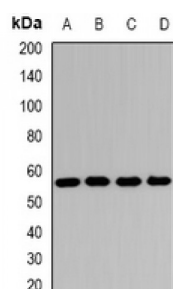
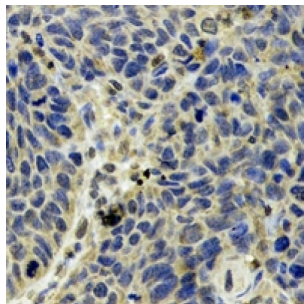


Abbexa Ltd, Innovation Centre, Cambridge Science Park, Cambridge, CB4 0EY, UK  
Telephone: +44 (0) 1223 755950 - Fax: +44 (0) 1223 755951 - E-Mail: info@abbexa.com

### SCOT Antibody

Catalogue No.: abx141457



SCOT Antibody is a Rabbit Polyclonal against SCOT.

**Target:** SCOT

**Reactivity:** Human

**Host:** Rabbit

**Clonality:** Polyclonal

**Tested Applications:** WB, IHC

**Recommended dilutions:** WB: 1/500 - 1/2000, IHC: 1/50 - 1/100. Optimal dilutions/concentrations should be determined by the end user.

**Immunogen:** Recombinant full length protein of human SCOT.

**Purification:** Affinity chromatography.

**Form:** Liquid

**Isotype:** IgG

**Specificity:** Recognizes endogenous levels of SCOT protein.

Abbexa Ltd, Innovation Centre, Cambridge Science Park, Cambridge, CB4 0EY, UK  
Telephone: +44 (0) 1223 755950 - Fax: +44 (0) 1223 755951 - E-Mail: info@abbexa.com

**Storage:** Aliquot and store at -20 °C. Avoid repeated freeze/thaw cycles.

**GeneID:** [5019](#)

**Gene Symbol:** OXCT1

**Buffer:** 0.42% Potassium phosphate, 0.87% Sodium chloride, pH 7.3, 30% glycerol, and 0.01% sodium azide.

**Note:** This product is for research use only.