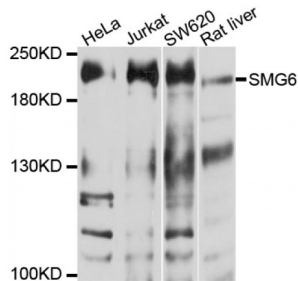


## Telomerase-Binding Protein EST1A (SMG6) Antibody

Catalogue No.: abx136051



Western blot analysis of extracts of various cell lines, using SMG6 antibody (abx136051) at 1/1000 dilution.

SMG6 Antibody is a Rabbit Polyclonal against SMG6.

**Target:** SMG6

**Reactivity:** Human, Rat

**Host:** Rabbit

**Clonality:** Polyclonal

**Tested Applications:** WB

**Recommended dilutions:** WB: 1/500 - 1/2000. Optimal dilutions/concentrations should be determined by the end user.

**Purification:** Affinity purified.

**Form:** Liquid

**Isotype:** IgG

**Storage:** Aliquot and store at -20 °C. Avoid repeated freeze/thaw cycles.

**Molecular Weight:** Calculated MW: 37 kDa/57 kDa/160 kDa  
Observed MW: 210 kDa

**Swiss Prot:** [Q86US8](#)

**GeneID:** [23293](#)

**Gene Symbol:** SMG6

**Concentration:** > 1 mg/ml

Abbexa Ltd, Innovation Centre, Cambridge Science Park, Cambridge, CB4 0EY, UK  
Telephone: +44 (0) 1223 755950 - Fax: +44 (0) 1223 755951 - E-Mail: [info@abbexa.com](mailto:info@abbexa.com)

**Buffer:** PBS, pH 7.3, 0.02% sodium azide, 50% glycerol.

**Note:** This product is for research use only.