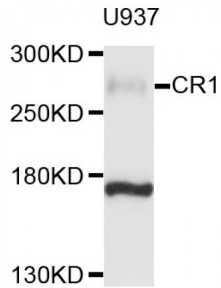


Abbexa Ltd, Innovation Centre, Cambridge Science Park, Cambridge, CB4 0EY, UK
Telephone: +44 (0) 1223 755950 - Fax: +44 (0) 1223 755951 - E-Mail: info@abbexa.com

C3b/C4b Receptor (CR1) Antibody

Catalogue No.: abx135977



Western blot analysis of extracts of U-937 cells, using CR1 antibody (abx135977) at 1/1000 dilution.

CR1 Antibody is a Rabbit Polyclonal against CR1.

Target: CR1

Reactivity: Human

Host: Rabbit

Clonality: Polyclonal

Tested Applications: WB

Recommended dilutions: WB: 1/500 - 1/2000. Optimal dilutions/concentrations should be determined by the end user.

Purification: Affinity purified.

Form: Liquid

Isotype: IgG

Storage: Aliquot and store at -20 °C. Avoid repeated freeze/thaw cycles.

Molecular Weight: Calculated MW: 223 kDa
Observed MW: 270 kDa

Swiss Prot: [P17927](#)

GeneID: [1378](#)

Gene Symbol: CR1

Concentration: > 1 mg/ml

Abbexa Ltd, Innovation Centre, Cambridge Science Park, Cambridge, CB4 0EY, UK
Telephone: +44 (0) 1223 755950 - Fax: +44 (0) 1223 755951 - E-Mail: info@abbexa.com

Buffer: PBS, pH 7.3, 0.02% sodium azide, 50% glycerol.

Note: This product is for research use only.