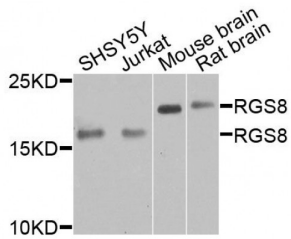


Abbexa Ltd, Innovation Centre, Cambridge Science Park, Cambridge, CB4 0EY, UK
 Telephone: +44 (0) 1223 755950 - Fax: +44 (0) 1223 755951 - E-Mail: info@abbexa.com

Regulator of G-Protein Signaling 8 (RGS8) Antibody

Catalogue No.: abx135907



Western blot analysis of extracts of various cell lines, using RGS8 antibody (abx135907) at 1/1000 dilution.

RGS8 Antibody is a Rabbit Polyclonal against RGS8.

Target: RGS8

Reactivity: Human, Mouse, Rat

Host: Rabbit

Clonality: Polyclonal

Tested Applications: WB

Recommended dilutions: WB: 1/200 - 1/500. Optimal dilutions/concentrations should be determined by the end user.

Purification: Affinity purified.

Form: Liquid

Isotype: IgG

Storage: Aliquot and store at -20 °C. Avoid repeated freeze/thaw cycles.

Molecular Weight: Calculated MW: 20 kDa/22 kDa
 Observed MW: 21 kDa

Swiss Prot: [P57771](#)

GeneID: [85397](#)

Gene Symbol: RGS8

Concentration: > 1 mg/ml

Abbexa Ltd, Innovation Centre, Cambridge Science Park, Cambridge, CB4 0EY, UK
Telephone: +44 (0) 1223 755950 - Fax: +44 (0) 1223 755951 - E-Mail: info@abbexa.com

Buffer: PBS, pH 7.3, 0.02% sodium azide, 50% glycerol.

Note: This product is for research use only.