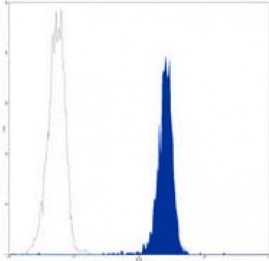


**Platelet And Endothelial Cell Adhesion Molecule 1 (PECAM1) Antibody**

Catalogue No.: abx134531



Flow cytometric analysis of human peripheral blood platelets using CD31 Antibody, followed by anti-mouse IgG PE.

Mouse monoclonal antibody to CD31.

**Target:** CD31

**Reactivity:** Human

**Host:** Mouse

**Clonality:** Monoclonal

**Tested Applications:** IF/ICC, FCM

**Purification:** The antibody was purified by affinity chromatography.

**Form:** Liquid

**Isotype:** IgG<sub>1</sub>

**Conjugation:** Unconjugated

**Specificity:** Recognises human CD31.

**Storage:** Store at 4°C for up to one year. Do not freeze.

**Swiss Prot:** [P16284](#)

**GeneID:** [5175](#)

**Gene Symbol:** PECAM1

**Buffer:** PBS, pH 7.3, 0.2% BSA, and 0.02% sodium azide.

Abbexa Ltd, Innovation Centre, Cambridge Science Park, Cambridge, CB4 0EY, UK  
Telephone: +44 (0) 1223 755950 - Fax: +44 (0) 1223 755951 - E-Mail: info@abbexa.com

- Directions for use:**
1. Take 100 ul peripheral blood anticoagulated by EDTA and add to the bottom of 5 ml tube.
  2. Add appropriate amount of antibody to the bottom of flow tube mixing with the whole blood; incubate for 30 minutes at room temperature.
  3. Add 2 ml RBC lysis buffer; incubate for 10 minutes after mixing; dissolve red blood cells.
  4. Sample tube is set to 1000 rpm centrifugation for 5 minutes; discard the supernatant.
  5. Add 2 ml PBS wash buffer to resuspend the cells; then 1000 rpm centrifugation for 5 minutes; discard the supernatant.
  6. Add appropriate amount of fluorescent-labeled anti-mouse IgGs and incubate for 20 minutes away from light at room temperature.
  7. Add 2 ml PBS wash buffer to resuspend the cells; then 1000 rpm centrifugation for 5 minutes; discard the supernatant.
  8. Add 0.5 ml PBS wash buffer to resuspend the cells and detect by flow cytometry (sample should be determined on the day on the machine and can also be added fixation overnight at 4 °C then measured).

**Note:** This product is for research use only.