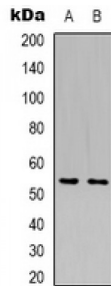


Glucose Transporter Type 5, Small Intestine (GLUT5) Antibody

Catalogue No.: abx133767



Rabbit polyclonal antibody to GLUT5.

Target: GLUT5

Reactivity: Human

Host: Rabbit

Clonality: Polyclonal

Tested Applications: WB

Recommended dilutions: WB: (1/500 - 1/1000). Optimal dilutions/concentrations should be determined by the end user.

Immunogen: KLH-conjugated synthetic peptide encompassing a sequence within the N-term region of human GLUT5. The exact sequence is proprietary.

Purification: The antibody was purified by affinity chromatography.

Form: Liquid

Isotype: IgG

Specificity: Recognizes endogenous levels of GLUT5 protein.

Storage: Aliquot and store at -20 °C. Avoid repeated freeze/thaw cycles.

Swiss Prot: [P22732](#)

GenEID: [6518](#)

Gene Symbol: SLC2A5

Abbexa Ltd, Innovation Centre, Cambridge Science Park, Cambridge, CB4 0EY, UK
Telephone: +44 (0) 1223 755950 - Fax: +44 (0) 1223 755951 - E-Mail: info@abbexa.com

Buffer: PBS, pH 7.3, 0.2% BSA, and 0.02% sodium azide.

Note: This product is for research use only.