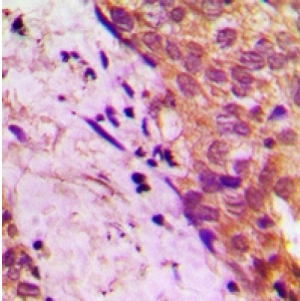


**Amyloid Beta Precursor Protein Binding Protein B2 (APBB2) Antibody**

Catalogue No.: abx133694



Rabbit polyclonal antibody to APBB2.

**Target:** APBB2**Reactivity:** Human, Mouse, Rat, Cow**Host:** Rabbit**Clonality:** Polyclonal**Tested Applications:** WB, IHC**Recommended dilutions:** WB: (1/500 - 1/1000), IHC: (1/100 - 1/200). Optimal dilutions/concentrations should be determined by the end user.**Immunogen:** KLH-conjugated synthetic peptide encompassing a sequence within the center region of human APBB2. The exact sequence is proprietary.**Purification:** The antibody was purified by affinity chromatography.**Form:** Liquid**Isotype:** IgG**Specificity:** Recognizes endogenous levels of APBB2 protein.**Storage:** Aliquot and store at -20 °C. Avoid repeated freeze/thaw cycles.**Swiss Prot:** [Q92870](#)**GeneID:** [323 11787](#)**Gene Symbol:** APBB2

Abbexa Ltd, Innovation Centre, Cambridge Science Park, Cambridge, CB4 0EY, UK  
Telephone: +44 (0) 1223 755950 - Fax: +44 (0) 1223 755951 - E-Mail: [info@abbexa.com](mailto:info@abbexa.com)

**Buffer:** PBS, pH 7.3, 0.2% BSA, and 0.02% sodium azide.

**Note:** This product is for research use only.