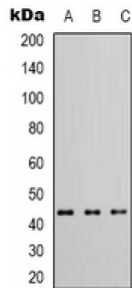


Abbexa Ltd, Innovation Centre, Cambridge Science Park, Cambridge, CB4 0EY, UK
Telephone: +44 (0) 1223 755950 - Fax: +44 (0) 1223 755951 - E-Mail: info@abbexa.com

Cell Adhesion Molecule 3 (CADM3) Antibody

Catalogue No.: abx133680



Rabbit polyclonal antibody to CADM3.

Target: CADM3

Reactivity: Human, Mouse, Cow

Host: Rabbit

Clonality: Polyclonal

Tested Applications: WB

Recommended dilutions: WB: (1/500 - 1/1000). Optimal dilutions/concentrations should be determined by the end user.

Immunogen: KLH-conjugated synthetic peptide encompassing a sequence within the center region of human CADM3. The exact sequence is proprietary.

Purification: The antibody was purified by affinity chromatography.

Form: Liquid

Isotype: IgG

Specificity: Recognizes endogenous levels of CADM3 protein.

Storage: Aliquot and store at -20 °C. Avoid repeated freeze/thaw cycles.

Swiss Prot: [Q8N126](#)

GenID: [57863](#) [94332](#)

Gene Symbol: CADM3

Abbexa Ltd, Innovation Centre, Cambridge Science Park, Cambridge, CB4 0EY, UK
Telephone: +44 (0) 1223 755950 - Fax: +44 (0) 1223 755951 - E-Mail: info@abbexa.com

Buffer: PBS, pH 7.3, 0.2% BSA, and 0.02% sodium azide.

Note: This product is for research use only.