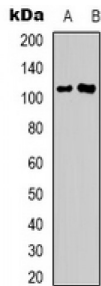


## Guanylate Kinase-Associated Protein (GKAP) Antibody

Catalogue No.: abx133625



Rabbit polyclonal antibody to GKAP.

**Target:** GKAP

**Reactivity:** Human, Mouse, Rat, Chicken, Dog

**Host:** Rabbit

**Clonality:** Polyclonal

**Tested Applications:** WB

**Recommended dilutions:** WB: (1/500 - 1/1000). Optimal dilutions/concentrations should be determined by the end user.

**Immunogen:** KLH-conjugated synthetic peptide encompassing a sequence within the C-term region of human GKAP. The exact sequence is proprietary.

**Purification:** The antibody was purified by affinity chromatography.

**Form:** Liquid

**Isotype:** IgG

**Specificity:** Recognizes endogenous levels of GKAP protein.

**Storage:** Aliquot and store at -20 °C. Avoid repeated freeze/thaw cycles.

**Swiss Prot:** [O14490](#)

**GenEID:** [9229](#) [224997](#) [65040](#)

**Gene Symbol:** DLGAP1

Abbexa Ltd, Innovation Centre, Cambridge Science Park, Cambridge, CB4 0EY, UK  
Telephone: +44 (0) 1223 755950 - Fax: +44 (0) 1223 755951 - E-Mail: [info@abbexa.com](mailto:info@abbexa.com)

**Buffer:** PBS, pH 7.3, 0.2% BSA, and 0.02% sodium azide.

**Note:** This product is for research use only.