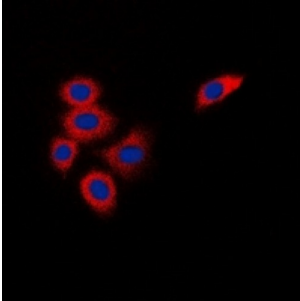


Abbexa Ltd, Innovation Centre, Cambridge Science Park, Cambridge, CB4 0EY, UK
Telephone: +44 (0) 1223 755950 - Fax: +44 (0) 1223 755951 - E-Mail: info@abbexa.com

Docking Protein 1 (DOK1) Antibody

Catalogue No.: abx133556



Rabbit polyclonal antibody to DOK1.

Target:	DOK1
Reactivity:	Human, Mouse, Rat, Cow
Host:	Rabbit
Clonality:	Polyclonal
Tested Applications:	WB, IHC, IF/ICC
Recommended dilutions:	WB: (1/500 - 1/1000), IHC: (1/100 - 1/200), IF/ICC: (1/100 - 1/500). Optimal dilutions/concentrations should be determined by the end user.
Immunogen:	KLH-conjugated synthetic peptide encompassing a sequence within the center region of human DOK1. The exact sequence is proprietary.
Purification:	The antibody was purified by affinity chromatography.
Form:	Liquid
Isotype:	IgG
Specificity:	Recognizes endogenous levels of DOK1 protein.
Storage:	Aliquot and store at -20 °C. Avoid repeated freeze/thaw cycles.
Swiss Prot:	Q99704
GeneID:	1796 13448 312477
Gene Symbol:	DOK1

Abbexa Ltd, Innovation Centre, Cambridge Science Park, Cambridge, CB4 0EY, UK
Telephone: +44 (0) 1223 755950 - Fax: +44 (0) 1223 755951 - E-Mail: info@abbexa.com

Buffer: PBS, pH 7.3, 0.2% BSA, and 0.02% sodium azide.

Note: This product is for research use only.