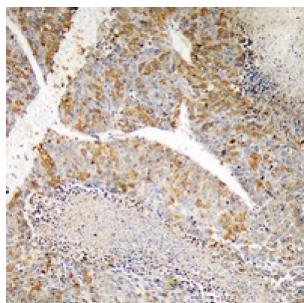


Abbexa Ltd, Innovation Centre, Cambridge Science Park, Cambridge, CB4 0EY, UK  
Telephone: +44 (0) 1223 755950 - Fax: +44 (0) 1223 755951 - E-Mail: [info@abbexa.com](mailto:info@abbexa.com)

## PI3K p110 gamma Antibody

Catalogue No.: abx133539



Rabbit polyclonal antibody to PI3K p110 gamma.

**Target:** PI3K p110 gamma

**Reactivity:** Human, Mouse

**Host:** Rabbit

**Clonality:** Polyclonal

**Tested Applications:** WB, IHC

**Recommended dilutions:** WB: (1/500 - 1/1000), IHC: (1/100 - 1/200). Optimal dilutions/concentrations should be determined by the end user.

**Immunogen:** KLH-conjugated synthetic peptide encompassing a sequence within the center region of human PI3K p110 gamma. The exact sequence is proprietary.

**Purification:** The antibody was purified by affinity chromatography.

**Form:** Liquid

**Isotype:** IgG

**Specificity:** Recognizes endogenous levels of PI3K p110 gamma protein.

**Storage:** Aliquot and store at -20 °C. Avoid repeated freeze/thaw cycles.

**Swiss Prot:** [P48736](#)

**GeneID:** [5294 30955](#)

**Gene Symbol:** PIK3CG

Abbexa Ltd, Innovation Centre, Cambridge Science Park, Cambridge, CB4 0EY, UK  
Telephone: +44 (0) 1223 755950 - Fax: +44 (0) 1223 755951 - E-Mail: [info@abbexa.com](mailto:info@abbexa.com)

**Buffer:** PBS, pH 7.3, 0.2% BSA, and 0.02% sodium azide.

**Note:** This product is for research use only.