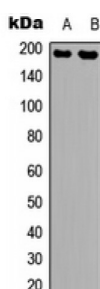
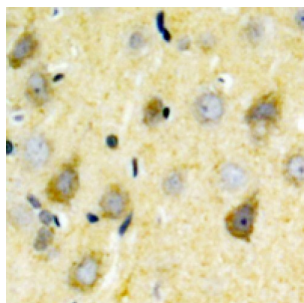


Abbexa Ltd, Innovation Centre, Cambridge Science Park, Cambridge, CB4 0EY, UK  
Telephone: +44 (0) 1223 755950 - Fax: +44 (0) 1223 755951 - E-Mail: info@abbexa.com

### NMDAR2B (pY1336) Antibody

Catalogue No.: abx133172



Rabbit polyclonal antibody to NMDAR2B (pY1336).

**Target:** NMDAR2B (pY1336)

**Reactivity:** Human, Mouse, Rat

**Host:** Rabbit

**Clonality:** Polyclonal

**Tested Applications:** WB, IHC

**Recommended dilutions:** WB: 1/500 - 1/1000, IH: 1/100 - 1/200. Optimal dilutions/concentrations should be determined by the end user.

**Immunogen:** KLH-conjugated synthetic peptide encompassing a sequence within the C-term region of human NMDAR2B. The exact sequence is proprietary.

**Purification:** The antibody was purified by immunogen affinity chromatography.

**Form:** Liquid

**Isotype:** IgG

**Conjugation:** KLH

Abbexa Ltd, Innovation Centre, Cambridge Science Park, Cambridge, CB4 0EY, UK  
Telephone: +44 (0) 1223 755950 - Fax: +44 (0) 1223 755951 - E-Mail: [info@abbexa.com](mailto:info@abbexa.com)

**Specificity:** Recognizes endogenous levels of NMDAR2B (pY1336) protein.

**Swiss Prot:** [Q13224](#) [Q01097](#) [Q00960](#)

**GeneID:** [2904](#) [24410](#)

**Gene Symbol:** GRIN2B

**Buffer:** Liquid in 0.42% Potassium phosphate, 0.87% Sodium chloride, pH 7.3, 30% glycerol, and 0.01% sodium azide.

**Note:** This product is for research use only.