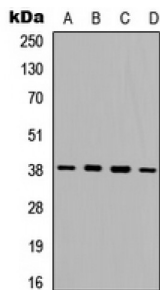
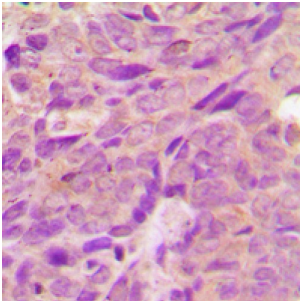


Abbexa Ltd, Innovation Centre, Cambridge Science Park, Cambridge, CB4 0EY, UK  
 Telephone: +44 (0) 1223 755950 - Fax: +44 (0) 1223 755951 - E-Mail: info@abbexa.com

## 5'-AMP-Activated Protein Kinase Subunit Beta-1 (AMPK beta 1) Antibody

Catalogue No.: abx133091



AMPK beta 1 Antibody is a Rabbit Polyclonal against AMPK beta 1.

**Target:** AMPK beta 1

**Reactivity:** Human, Mouse, Rabbit, Cow, Pig

**Host:** Rabbit

**Clonality:** Polyclonal

**Tested Applications:** WB, IHC

**Recommended dilutions:** WB: 1/500 - 1/1000, IH: 1/100 - 1/200. Optimal dilutions/concentrations should be determined by the end user.

**Immunogen:** KLH-conjugated synthetic peptide encompassing a sequence within the center region of human AMPK beta 1. The exact sequence is proprietary.

**Purification:** The antibody was purified by immunogen affinity chromatography.

**Form:** Liquid

**Conjugation:** Unconjugated

Abbexa Ltd, Innovation Centre, Cambridge Science Park, Cambridge, CB4 0EY, UK  
Telephone: +44 (0) 1223 755950 - Fax: +44 (0) 1223 755951 - E-Mail: [info@abbexa.com](mailto:info@abbexa.com)

<b>Specificity:</b>	Recognizes endogenous levels of AMPK beta 1 protein.
<b>Storage:</b>	Aliquot and store at -20°C for one year. Avoid repeated freeze/thaw cycles.
<b>Swiss Prot:</b>	<a href="#">Q9Y478</a> <a href="#">Q9R078</a> <a href="#">P80386</a>
<b>GeneID:</b>	<a href="#">5564</a> <a href="#">83803</a>
<b>Gene Symbol:</b>	PRKAB1
<b>Buffer:</b>	Liquid in 0.42% Potassium phosphate, 0.87% Sodium chloride, pH 7.3, 30% glycerol, and 0.01% sodium azide.
<b>Note:</b>	This product is for research use only.