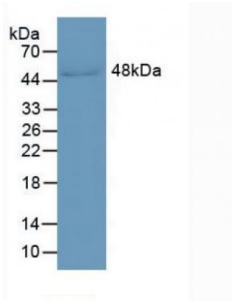
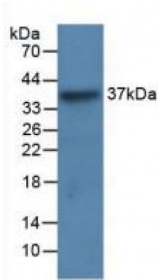


Leucine Rich Alpha-2-Glycoprotein 1 (LRG1) Antibody

Catalogue No.: abx132111



Western blot analysis of Human Serum.



Western blot analysis of recombinant Human LRG1.

Leucine Rich Alpha-2-Glycoprotein 1 Antibody is a Mouse Monoclonal against Leucine Rich Alpha-2-Glycoprotein 1.

Target: Leucine Rich Alpha-2-Glycoprotein 1

Reactivity: Human

Host: Mouse

Clonality: Monoclonal

Tested Applications: WB, IHC, IF/ICC, IP

Recommended dilutions: Optimal dilutions/concentrations should be determined by the end user.

Immunogen: Thr37-Leu340

Purification: Protein A + Protein G affinity chromatography.

Form: Liquid

Conjugation: Unconjugated

Storage: Store at 4 °C for frequent use. Aliquot and store at -20 °C for one year. Avoid repeated freeze/thaw cycles.

Abbexa Ltd, Innovation Centre, Cambridge Science Park, Cambridge, CB4 0EY, UK
Telephone: +44 (0) 1223 755950 - Fax: +44 (0) 1223 755951 - E-Mail: info@abbexa.com

Swiss Prot: [P02750](#)

Buffer: 0.01 M PBS, pH 7.4, containing 0.05% Proclin-300, 50% glycerol.

Note: This product is for research use only.