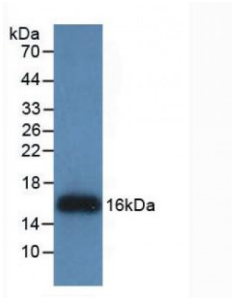
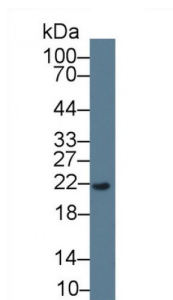
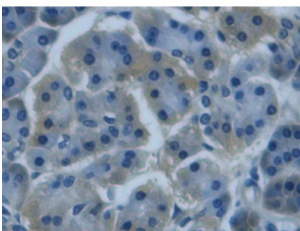


Regenerating Islet Derived Protein 3 Gamma (REG3G) AntibodyCatalogue No.: [abx132048](#)

Western blot analysis of recombinant Human REG3g.

Western blot analysis of Human Serum, using Human REG3g Antibody (3 µg/ml) and HRP-conjugated Goat Anti-Mouse antibody ([abx400001](#), 0.2 µg/ml).

IHC-P analysis of Human Pancreas Tissue, with DAB staining.

REG3G Antibody is a Mouse Monoclonal against REG3G.

Target: Regenerating Islet-Derived Protein 3 Gamma**Reactivity:** Human**Host:** Mouse**Clonality:** Monoclonal**Tested Applications:** WB, IHC, IF/ICC, IP**Recommended dilutions:** WB: 0.5-5 µg/ml, IHC: 5-20 µg/ml, IF/ICC: 5-20 µg/ml. Optimal dilutions/concentrations should be determined by the end user.**Immunogen:** [abx167936](#) - Recombinant REG3g (Ser39-Asp175) expressed in E. coli

Abbexa Ltd, Innovation Centre, Cambridge Science Park, Cambridge, CB4 0EY, UK
Telephone: +44 (0) 1223 755950 - Fax: +44 (0) 1223 755951 - E-Mail: info@abbexa.com

Purification:	Protein A + Protein G affinity chromatography.
Form:	Liquid
Conjugation:	Unconjugated
Storage:	Store at 4 °C for frequent use. Aliquot and store at -20 °C for one year. Avoid repeated freeze/thaw cycles.
Swiss Prot:	<u>Q6UW15</u>
Buffer:	0.01 M PBS, pH 7.4, containing 0.05% Proclin-300, 50% glycerol.
Note:	This product is for research use only.