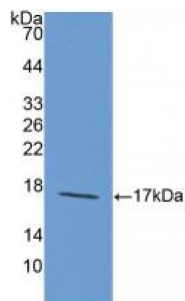


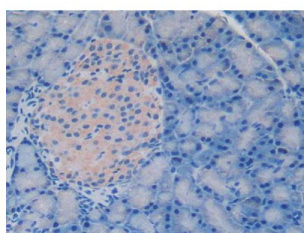
Abbexa Ltd, Innovation Centre, Cambridge Science Park, Cambridge, CB4 0EY, UK  
Telephone: +44 (0) 1223 755950 - Fax: +44 (0) 1223 755951 - E-Mail: info@abbexa.com

### Laminin Alpha 1 (LAMa1) Antibody

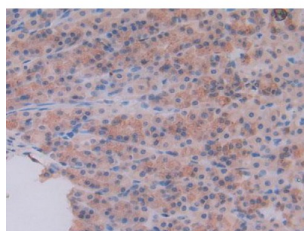
Catalogue No.: abx131246



Western blot analysis of recombinant Rat LAMa1.



IHC-P analysis of Rat Pancreas Tissue, with DAB staining.



IHC-P analysis of Rat Stomach Tissue, with DAB staining.

Laminin alpha 1 Antibody is a Rabbit Polyclonal against Laminin alpha 1.

**Target:** Laminin Alpha 1 (LAMa1)

**Reactivity:** Rat

**Host:** Rabbit

**Clonality:** Polyclonal

**Tested Applications:** WB, IHC, IF/ICC, IP

**Recommended dilutions:** Optimal dilutions/concentrations should be determined by the end user.

**Immunogen:** LAMa1 (Pro1156-Ile1276)

Abbexa Ltd, Innovation Centre, Cambridge Science Park, Cambridge, CB4 0EY, UK  
Telephone: +44 (0) 1223 755950 - Fax: +44 (0) 1223 755951 - E-Mail: info@abbexa.com

|                      |  |
|----------------------|--|
| <b>Purification:</b> | Antigen-specific affinity chromatography followed by Protein A affinity chromatography.                      |
| <b>Form:</b>         | Liquid   |
| <b>Conjugation:</b>  | Unconjugated   |
| <b>Storage:</b>      | Store at 4 °C for frequent use. Aliquot and store at -20 °C for one year. Avoid repeated freeze/thaw cycles. |
| <b>Swiss Prot:</b>   | <a href="#"><u>D4A409</u></a>  |
| <b>Buffer:</b>       | 0.01 M PBS, pH 7.4, containing 0.05% Proclin-300, 50% glycerol.  |
| <b>Note:</b>         | This product is for research use only.   |