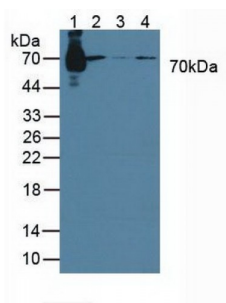


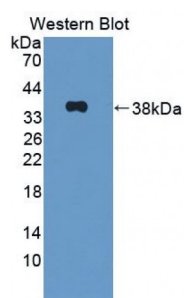
Abbexa Ltd, Innovation Centre, Cambridge Science Park, Cambridge, CB4 0EY, UK
Telephone: +44 (0) 1223 755950 - Fax: +44 (0) 1223 755951 - E-Mail: info@abbexa.com

Signal Transducing Adaptor Molecule 1 (STAM1) Antibody

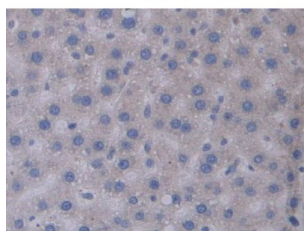
Catalogue No.: abx130346



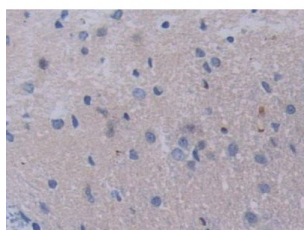
Western blot analysis of (1) Rat Serum, (2) Human Raji cells, (3) Human Jurkat cells and (4) Human K562 cells.



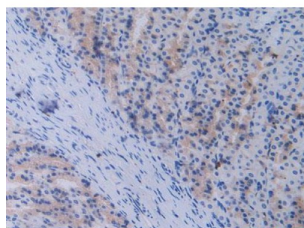
Western blot analysis of recombinant Rat STAM1.



IHC-P analysis of Rat Liver Tissue, with DAB staining.

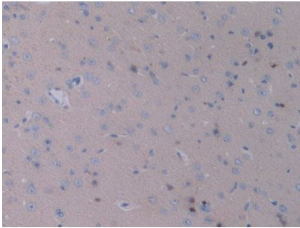


IHC-P analysis of Rat Spinal Marrow Tissue, with DAB staining.



IHC-P analysis of Rat Stomach Tissue, with DAB staining.

Abbexa Ltd, Innovation Centre, Cambridge Science Park, Cambridge, CB4 0EY, UK
Telephone: +44 (0) 1223 755950 - Fax: +44 (0) 1223 755951 - E-Mail: info@abbexa.com



IHC-P analysis of Rat Brain Tissue, with DAB staining.

Signal Transducing Adaptor Molecule 1 Antibody is a Rabbit Polyclonal against Signal Transducing Adaptor Molecule 1.

Target:	Signal Transducing Adaptor Molecule 1 (STAM1)
Reactivity:	Rat
Host:	Rabbit
Clonality:	Polyclonal
Tested Applications:	WB, IHC, IF/ICC, IP
Recommended dilutions:	Optimal dilutions/concentrations should be determined by the end user.
Immunogen:	STAM1 (Pro199-Met466)
Purification:	Antigen-specific affinity chromatography followed by Protein A affinity chromatography.
Form:	Liquid
Conjugation:	Unconjugated
Storage:	Store at 4 °C for frequent use. Aliquot and store at -20 °C for one year. Avoid repeated freeze/thaw cycles.
Buffer:	0.01 M PBS, pH 7.4, containing 0.05% Proclin-300, 50% glycerol.
Note:	This product is for research use only.