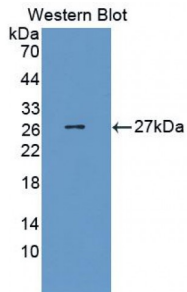
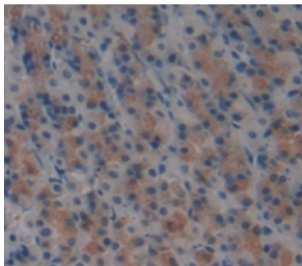


Signaling Lymphocytic Activation Molecule Family, Member 1 (SLAMF1) Antibody

Catalogue No.: abx130343



Western blot analysis of the recombinant protein.



IHC-P analysis of Kidney tissue, with DAB staining.

Signaling Lymphocytic Activation Molecule Family, Member 1 Antibody is a Rabbit Polyclonal against Signaling Lymphocytic Activation Molecule Family, Member 1.

Target: Signaling Lymphocytic Activation Molecule Family, Member 1 (SLAMF1)

Reactivity: Rat

Host: Rabbit

Clonality: Polyclonal

Tested Applications: WB, IHC, IF/ICC, IP

Recommended dilutions: Optimal dilutions/concentrations should be determined by the end user.

Immunogen: SLAMF1 (Leu17-Trp227)

Purification: Antigen-specific affinity chromatography followed by Protein A affinity chromatography.

Form: Liquid

Conjugation: Unconjugated

Abbexa Ltd, Innovation Centre, Cambridge Science Park, Cambridge, CB4 0EY, UK
Telephone: +44 (0) 1223 755950 - Fax: +44 (0) 1223 755951 - E-Mail: info@abbexa.com

Storage: Store at 4 °C for frequent use. Aliquot and store at -20 °C for one year. Avoid repeated freeze/thaw cycles.

Buffer: PBS, pH 7.4, containing 0.02% NaN₃, 50% glycerol.

Note: This product is for research use only.