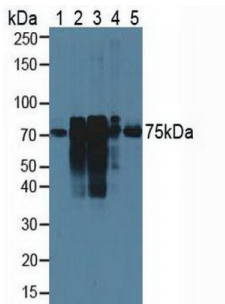


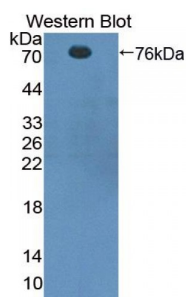
Abbexa Ltd, Innovation Centre, Cambridge Science Park, Cambridge, CB4 0EY, UK
Telephone: +44 (0) 1223 755950 - Fax: +44 (0) 1223 755951 - E-Mail: info@abbexa.com

Cortactin (CTTN) Antibody

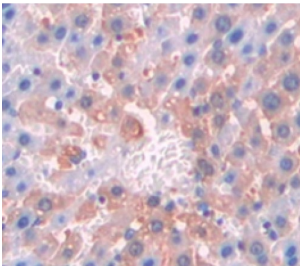
Catalogue No.: abx130097



Western blot analysis of (1) Rat Serum, (2) Rat Lung Tissue, (3) Rat Placenta Tissue, (4) Rat Uterus Tissue and (5) Human HeLa cells.



Western blot analysis of recombinant Rat CTTN.



IHC-P analysis of Kidney tissue, with DAB staining.

Cortactin Antibody is a Rabbit Polyclonal against Cortactin.

Target: Cortactin (CTTN)

Reactivity: Rat

Host: Rabbit

Clonality: Polyclonal

Tested Applications: WB, IHC, IF/ICC, IP

Recommended dilutions: Optimal dilutions/concentrations should be determined by the end user.

Immunogen: CTTN (Met1-Gln509)

Abbexa Ltd, Innovation Centre, Cambridge Science Park, Cambridge, CB4 0EY, UK
Telephone: +44 (0) 1223 755950 - Fax: +44 (0) 1223 755951 - E-Mail: info@abbexa.com

- Purification:** Antigen-specific affinity chromatography followed by Protein A affinity chromatography.
- Form:** Liquid
- Conjugation:** Unconjugated
- Storage:** Store at 4 °C for frequent use. Aliquot and store at -20 °C for one year. Avoid repeated freeze/thaw cycles.
- Buffer:** 0.01 M PBS, pH 7.4, containing 0.05% Proclin-300, 50% glycerol.
- Note:** This product is for research use only.