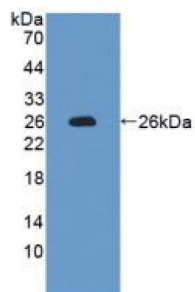


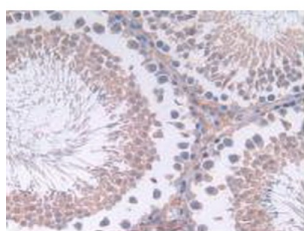
Abbexa Ltd, Innovation Centre, Cambridge Science Park, Cambridge, CB4 0EY, UK
Telephone: +44 (0) 1223 755950 - Fax: +44 (0) 1223 755951 - E-Mail: info@abbexa.com

Interleukin 12A (IL12A) Antibody

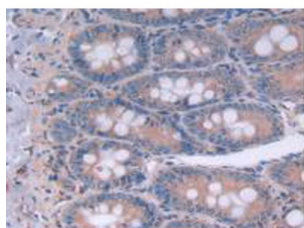
Catalogue No.: abx130040



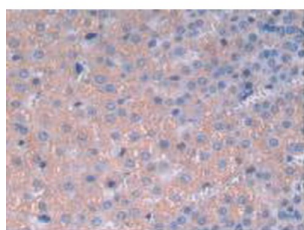
Western blot analysis of recombinant Rat IL12A.



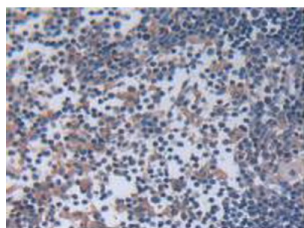
IHC-P analysis of Rat Testis Tissue, with DAB staining.



IHC-P analysis of Rat Intestine Tissue, with DAB staining.



IHC-P analysis of Rat Adrenal Gland Tissue, with DAB staining.



IHC-P analysis of Rat Lymph Node Tissue, with DAB staining.

Interleukin 12A Antibody is a Rabbit Polyclonal against Interleukin 12A.

Abbexa Ltd, Innovation Centre, Cambridge Science Park, Cambridge, CB4 0EY, UK
Telephone: +44 (0) 1223 755950 - Fax: +44 (0) 1223 755951 - E-Mail: info@abbexa.com

Target: Interleukin 12A (IL12A)

Reactivity: Rat

Host: Rabbit

Clonality: Polyclonal

Tested Applications: WB, IHC, IF/ICC, IP

Recommended dilutions: Optimal dilutions/concentrations should be determined by the end user.

Immunogen: IL12A (Arg23-Ser215)

Purification: Antigen-specific affinity chromatography followed by Protein A affinity chromatography.

Form: Liquid

Conjugation: Unconjugated

Storage: Store at 4 °C for frequent use. Aliquot and store at -20 °C for one year. Avoid repeated freeze/thaw cycles.

Swiss Prot: [Q9R103](#)

Buffer: 0.01 M PBS, pH 7.4, containing 0.05% Proclin-300, 50% glycerol.

Note: This product is for research use only.