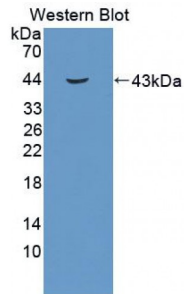


Insulin Like Growth Factor 1 (IGF1) Antibody

Catalogue No.: abx129987



Western blot analysis of the recombinant protein.

Insulin Like Growth Factor 1 (IGF1) Antibody is a Guinea Pig Polyclonal against Insulin Like Growth Factor 1 (IGF1).

Target:	Insulin Like Growth Factor 1 (IGF1)
Reactivity:	Rabbit
Host:	Guinea pig
Clonality:	Polyclonal
Tested Applications:	WB, IHC, IF/ICC, IP
Recommended dilutions:	WB: 0.5-2 µg/ml, IHC: 5-20 µg/ml, ICC: 5-20 µg/ml. Optimal dilutions/concentrations should be determined by the end user.
Immunogen:	abx167556 - Recombinant IGF1 (Gly33-Lys143) expressed in E. coli.
Purification:	Antigen-specific affinity chromatography followed by Protein A affinity chromatography.
Form:	Liquid
Conjugation:	Unconjugated
Storage:	Store at 4 °C for frequent use. Aliquot and store at -20 °C for one year. Avoid repeated freeze/thaw cycles.
Swiss Prot:	Q95222
Buffer:	PBS, pH 7.4, containing 0.02% NaN ₃ , 50% glycerol.
Note:	This product is for research use only.