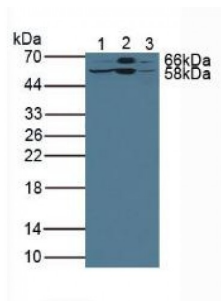


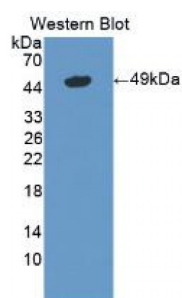
Abbexa Ltd, Innovation Centre, Cambridge Science Park, Cambridge, CB4 0EY, UK
Telephone: +44 (0) 1223 755950 - Fax: +44 (0) 1223 755951 - E-Mail: info@abbexa.com

Lipolysis Stimulated Lipoprotein Receptor (LSR) Antibody

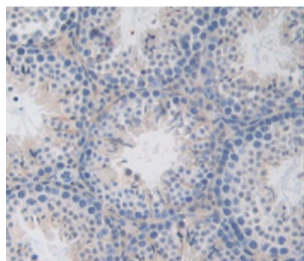
Catalogue No.: abx129837



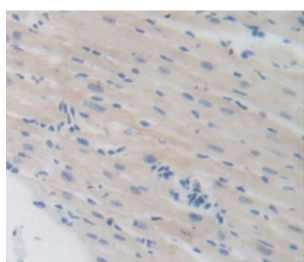
Western blot analysis of (1) Rat Liver Tissue, (2) Mouse Liver Tissue and (3) Human HepG2 Cells.



Western blot analysis of the recombinant protein.



IHC-P analysis of Mouse Testis Tissue, with DAB staining.



IHC-P analysis of Mouse Heart Tissue, with DAB staining.

Lipolysis Stimulated Lipoprotein Receptor Antibody is a Rabbit Polyclonal against Lipolysis Stimulated Lipoprotein Receptor.

Target: Lipolysis Stimulated Lipoprotein Receptor (LSR)

Reactivity: Mouse

Host: Rabbit

Abbexa Ltd, Innovation Centre, Cambridge Science Park, Cambridge, CB4 0EY, UK
Telephone: +44 (0) 1223 755950 - Fax: +44 (0) 1223 755951 - E-Mail: info@abbexa.com

Clonality: Polyclonal

Tested Applications: WB, IHC, IF/ICC, IP

Recommended dilutions: Optimal dilutions/concentrations should be determined by the end user.

Immunogen: LSR (Ser35-Glu205)

Purification: Antigen-specific affinity chromatography followed by Protein A affinity chromatography.

Form: Liquid

Conjugation: Unconjugated

Storage: Store at 4 °C for frequent use. Aliquot and store at -20 °C for one year. Avoid repeated freeze/thaw cycles.

Swiss Prot: [Q99KG5](#)

Buffer: PBS, pH 7.4, containing 0.02% NaN₃, 50% glycerol.

Note: This product is for research use only.