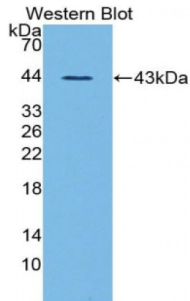
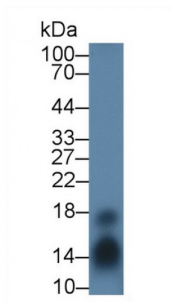


Ghrelin (GHRL) Antibody

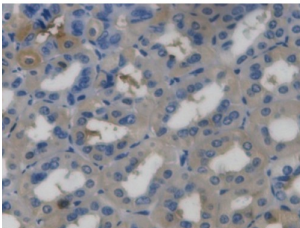
Catalogue No.: abx129314



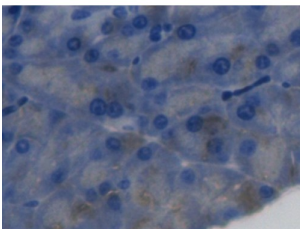
Western blot analysis of recombinant Mouse GHRL.



Western blot analysis of Mouse Stomach Lysate, using Rabbit Anti-Mouse GHRL Antibody (1 µg/ml) and HRP-conjugated Goat Anti-Rabbit antibody ([abx400043](#), 0.2 µg/ml).



IHC-P analysis of Mouse Stomach Tissue, with DAB staining, using Rabbit Anti-Mouse GHRL Antibody (20 µg/ml) and HRP-conjugated Goat Anti-Rabbit antibody ([abx400043](#), 2 µg/ml).



IHC-P analysis of Mouse Pancreas Tissue, with DAB staining, using Rabbit Anti-Mouse GHRL Antibody (20 µg/ml) and HRP-conjugated Goat Anti-Rabbit antibody ([abx400043](#), 2 µg/ml).

Ghrelin Antibody is a Rabbit Polyclonal antibody against Ghrelin.

Target: Ghrelin (GHRL)

Reactivity: Mouse

Host: Rabbit

Abbexa Ltd, Innovation Centre, Cambridge Science Park, Cambridge, CB4 0EY, UK
Telephone: +44 (0) 1223 755950 - Fax: +44 (0) 1223 755951 - E-Mail: info@abbexa.com

Clonality: Polyclonal

Tested Applications: WB, IHC, IF/ICC, IP

Recommended dilutions: WB: 0.5-2 µg/ml, IHC: 5-20 µg/ml, IF/ICC: 5-20 µg/ml. Optimal dilutions/concentrations should be determined by the end user.

Immunogen: [abx167204](#) - Recombinant GHRL (Leu28-Lys117) expressed in E. coli

Purification: Antigen-specific affinity chromatography followed by Protein A affinity chromatography.

Form: Liquid

Conjugation: Unconjugated

Storage: Store at 4 °C for frequent use. Aliquot and store at -20 °C for one year. Avoid repeated freeze/thaw cycles.

Swiss Prot: [Q9EQX0](#)

Buffer: 0.01 M PBS, pH 7.4, containing 0.05% Proclin-300, 50% glycerol.

Note: This product is for research use only.