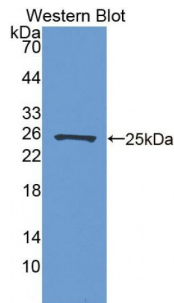


Ras Related C3 Botulinum Toxin Substrate 1 (Rac1) Antibody

Catalogue No.: abx129288



Western blot analysis of recombinant Human Rac1.

Ras Related C3 Botulinum Toxin Substrate 1 Antibody is a Rabbit Polyclonal against Ras Related C3 Botulinum Toxin Substrate 1.

Target:	Ras Related C3 Botulinum Toxin Substrate 1 (Rac1)
Reactivity:	Human
Host:	Chicken
Clonality:	Polyclonal
Tested Applications:	WB, IHC, IF/ICC, IP
Recommended dilutions:	WB: 0.5-2 µg/ml, IHC: 5-20 µg/ml, IF/ICC: 5-20 µg/ml. Optimal dilutions/concentrations should be determined by the end user.
Immunogen:	abx167132 - Recombinant Rac1 (Met1-Cys189) expressed in E. coli
Purification:	Antigen-specific affinity chromatography followed by Protein A affinity chromatography.
Form:	Liquid
Conjugation:	Unconjugated
Storage:	Store at 4 °C for frequent use. Aliquot and store at -20 °C for one year. Avoid repeated freeze/thaw cycles.
Swiss Prot:	P63000
Buffer:	PBS, pH 7.4, containing 0.02% NaN ₃ , 50% glycerol.
Note:	This product is for research use only.