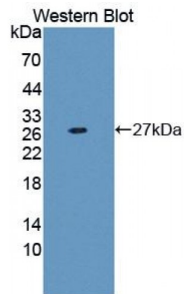
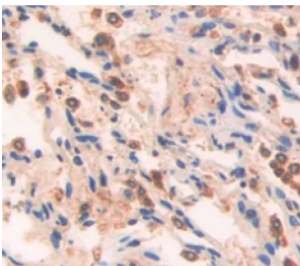


Proteasome Subunit Alpha Type 7 (PSMa7) Antibody

Catalogue No.: abx129145



Western blot analysis of the recombinant protein.



IHC-P analysis of Human Tissue, with DAB staining.

Proteasome Subunit Alpha Type 7 Antibody is a Rabbit Polyclonal against Proteasome Subunit Alpha Type 7.

Target: Proteasome Subunit Alpha Type 7 (PSMa7)**Reactivity:** Human**Host:** Rabbit**Clonality:** Polyclonal**Tested Applications:** WB, IHC, IF/ICC, IP**Recommended dilutions:** Optimal dilutions/concentrations should be determined by the end user.**Immunogen:** PSMa7 (Tyr3-Met211)**Purification:** Antigen-specific affinity chromatography followed by Protein A affinity chromatography.**Form:** Liquid**Conjugation:** Unconjugated**Storage:** Store at 4 °C for frequent use. Aliquot and store at -20 °C for one year. Avoid repeated freeze/thaw cycles.

Abbexa Ltd, Innovation Centre, Cambridge Science Park, Cambridge, CB4 0EY, UK
Telephone: +44 (0) 1223 755950 - Fax: +44 (0) 1223 755951 - E-Mail: info@abbexa.com

Swiss Prot: [O14818](#)

Buffer: PBS, pH 7.4, containing 0.02% NaN₃, 50% glycerol.

Note: This product is for research use only.