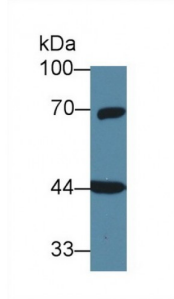


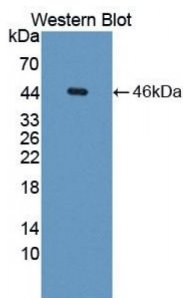
Abbexa Ltd, Innovation Centre, Cambridge Science Park, Cambridge, CB4 0EY, UK  
Telephone: +44 (0) 1223 755950 - Fax: +44 (0) 1223 755951 - E-Mail: [info@abbexa.com](mailto:info@abbexa.com)

## G Protein Alpha 11 (GNa11) Antibody

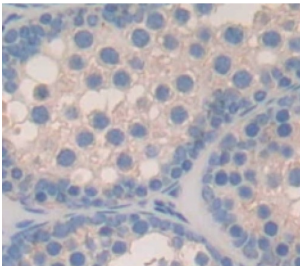
Catalogue No.: abx129141



Western blot analysis of Rat Cerebrum lysate, using Human GNa11 Antibody (1 µg/ml) and HRP-conjugated Goat Anti-Rabbit antibody ([abx400043](#), 0.2 µg/ml).



Western blot analysis of the recombinant protein.



IHC-P analysis of Human Tissue, with DAB staining.

G Protein Alpha 11 Antibody is a Rabbit Polyclonal against G Protein Alpha 11.

**Target:** G Protein Alpha 11 (GNa11)

**Reactivity:** Human

**Host:** Rabbit

**Clonality:** Polyclonal

**Tested Applications:** WB, IHC, IF/ICC, IP

**Recommended dilutions:** Optimal dilutions/concentrations should be determined by the end user.

**Immunogen:** GNa11 (Met1-Val359)

Abbexa Ltd, Innovation Centre, Cambridge Science Park, Cambridge, CB4 0EY, UK  
Telephone: +44 (0) 1223 755950 - Fax: +44 (0) 1223 755951 - E-Mail: [info@abbexa.com](mailto:info@abbexa.com)

|                      |  |
|----------------------|--|
| <b>Purification:</b> | Antigen-specific affinity chromatography followed by Protein A affinity chromatography.                      |
| <b>Form:</b>         | Liquid   |
| <b>Conjugation:</b>  | Unconjugated   |
| <b>Storage:</b>      | Store at 4 °C for frequent use. Aliquot and store at -20 °C for one year. Avoid repeated freeze/thaw cycles. |
| <b>Swiss Prot:</b>   | <a href="#">P29992</a>   |
| <b>Buffer:</b>       | PBS, pH 7.4, containing 0.01% Sarcosyl, 1 mM DTT, 5% Trehalose and Proclin300.                               |
| <b>Note:</b>         | This product is for research use only.   |