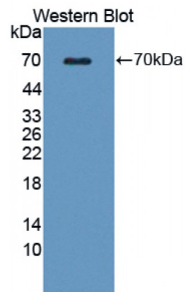


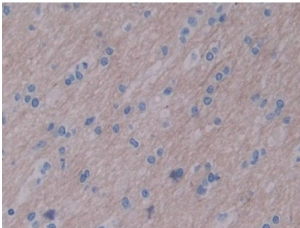
Abbexa Ltd, Innovation Centre, Cambridge Science Park, Cambridge, CB4 0EY, UK  
Telephone: +44 (0) 1223 755950 - Fax: +44 (0) 1223 755951 - E-Mail: info@abbexa.com

## Wingless Type MMTV Integration Site Family, Member 16 (WNT16) Antibody

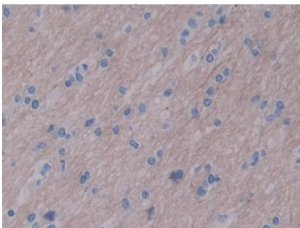
Catalogue No.: abx129065



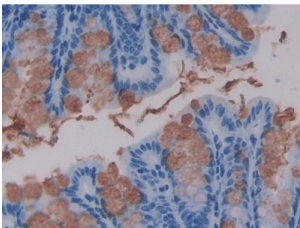
Western blot analysis of recombinant Human WNT16.



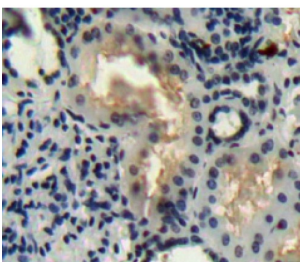
IHC-P analysis of Human Brain Tissue, with DAB staining.



IHC-P analysis of Human Brain Tissue, with DAB staining.



IHC-P analysis of Mouse Intestine Tissue, with DAB staining.



IHC-P analysis of Kidney tissue, with DAB staining.

Abbexa Ltd, Innovation Centre, Cambridge Science Park, Cambridge, CB4 0EY, UK  
Telephone: +44 (0) 1223 755950 - Fax: +44 (0) 1223 755951 - E-Mail: [info@abbexa.com](mailto:info@abbexa.com)

Wingless Type MMTV Integration Site Family, Member 16 Antibody is a Rabbit Polyclonal against Wingless Type MMTV Integration Site Family, Member 16.

<b>Target:</b>	Wingless Type MMTV Integration Site Family, Member 16 (WNT16)
<b>Reactivity:</b>	Human
<b>Host:</b>	Rabbit
<b>Clonality:</b>	Polyclonal
<b>Tested Applications:</b>	WB, IHC, IF/ICC, IP
<b>Recommended dilutions:</b>	WB: 0.5-2 µg/ml, IHC: 5-20 µg/ml, IF/ICC: 5-20 µg/ml. Optimal dilutions/concentrations should be determined by the end user.
<b>Immunogen:</b>	<a href="#">abx168134</a> Recombinant WNT16 (Asn30-Lys365) expressed in E. coli
<b>Purification:</b>	Antigen-specific affinity chromatography followed by Protein A affinity chromatography.
<b>Form:</b>	Liquid
<b>Conjugation:</b>	Unconjugated
<b>Storage:</b>	Store at 4 °C for frequent use. Aliquot and store at -20 °C for one year. Avoid repeated freeze/thaw cycles.
<b>Swiss Prot:</b>	<a href="#">Q9UBV4</a>
<b>Buffer:</b>	PBS, pH 7.4, containing 0.02% NaN <sub>3</sub> , 50% glycerol.
<b>Note:</b>	This product is for research use only.